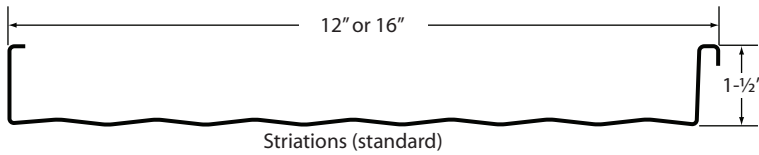


# ML150

## PRODUCT DATA SHEET

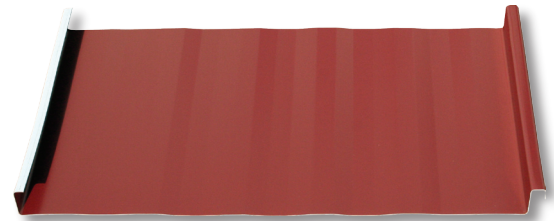


Your Roof. For Life.™

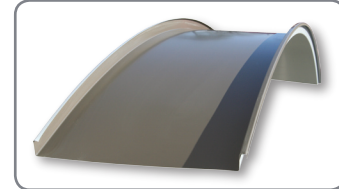


### Mechanical Lock 1-1/2" high seam

This Data Sheet is provided to assist you in determining the proper application for this roofing system. Refer to the applicable Guide Specifications and Detail Drawings on Union's web site for more details. Contact your local Union Roofing Representative for the most current information as the information contained herein may be revised at any time.



ML150C - Curved



Union's ML150 mechanical lock metal roofing system utilizes the industry's most popular panel profile and installation application. The roofing panels are placed into position and secured to the building with concealed clips. The panel side laps are then locked together with a rooftop electric seaming machine. The roof is attractive and has high wind uplift resistance. It is a structural roof but is most often installed over a solid deck below for support. It is often specified as a total roof or accent feature for schools, shopping centers, banks, hotels, offices, condominiums and a variety of other applications.

### PRODUCT ATTRIBUTES

- Attractive and highly wind resistant
- Clips and fasteners that secure the roof panels to the building structure are concealed
- 24 gauge standard Galvalume steel substrate (26 gauge is also available)
- A striated panel pan is standard
- 12 standard colors available for 24 gauge with Kynar finish
- 12 standard colors available for 26 gauge with Siliconized Modified Polyester (SMP) finish
- Additional custom colors available with orders of 5,000 square feet (requires longer lead time)
- Standard panel lengths available from 5' to 40' feet (Contact Union for longer lengths)
- 30 year Galvalume Plus steel warranty is available
- 30 year Paint Warranty is available
- 10 and 20 year standard Weathertightness warranties are available
- 3:12 Minimum Slope

## ML150C - 16" PANEL WIDTH

- 24 gauge - seam rotation 90°
- 50,000 psi yeild strength
- Deflection loads limited by ratio of L/240
- Factor of Safety 1.67

### ALLOWABLE UNIFORM LOAD IN POUNDS PER SQUARE FOOT

SPAN	2.5'	3.0'	3.5'	4.0'	4.5'	5.0'	5.5'	6.0'
2	176	130	95	72	57	46	38	31
3	201	143	106	82	65	52	43	36

## DESIGN CONSIDERATIONS

- Can be curved to a minimum 20' radius. Contact Union if a tighter radius is required.
- Can be installed over solid deck or open steel framing (refer to load span tables)
- Use sound attenuation (i.e. blanket insulation) beneath the metal roofing system to prevent noise during windy and/or thermal changing conditions
- Side lap seam has factory applied sealant